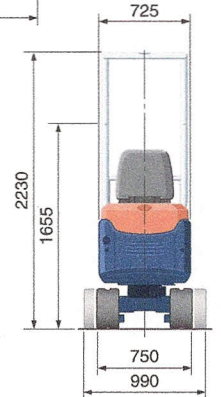
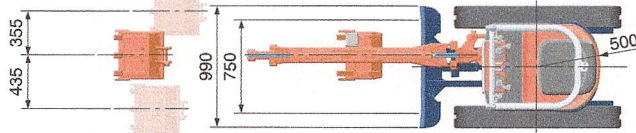
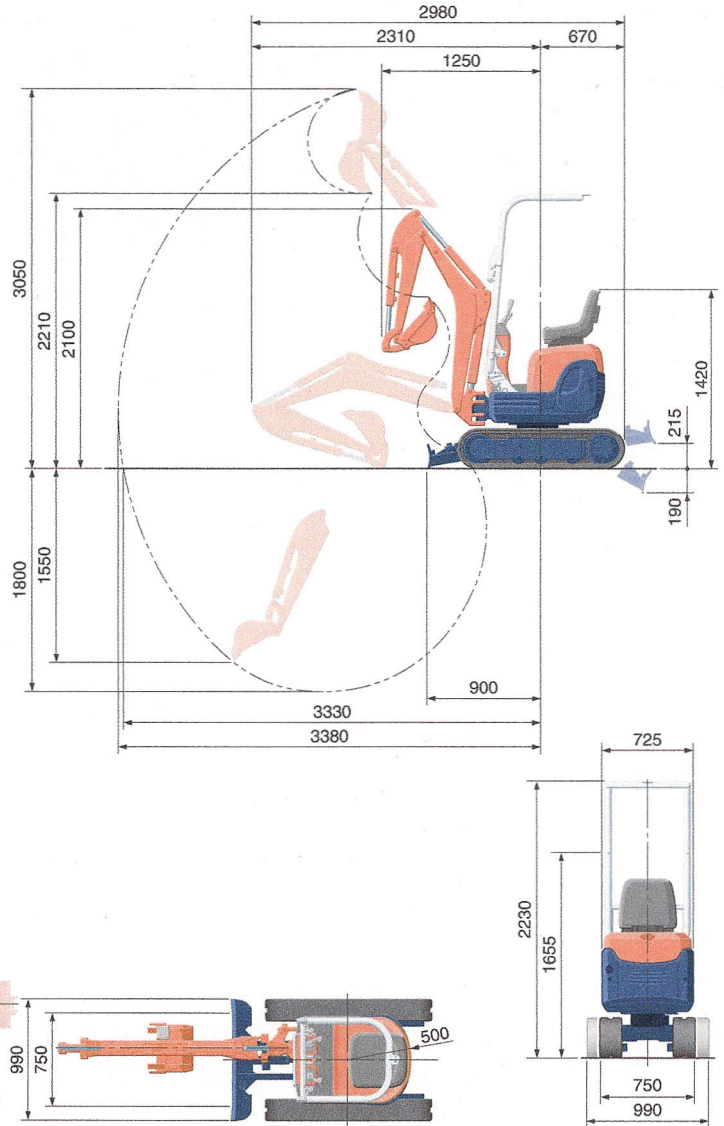


# SPECIFICATIONS

# WORKING RANGE

\*with rubber shoe type

Machine weight	Rubber crawler	kg	1120	
Bucket capacity, std. SAE/CECE		m <sup>3</sup>	0.024/0.020	
Bucket width	with side teeth	mm	398	
	without side teeth	mm	380	
Engine	Model	D722-BH-6		
	Type	Water-cooled, diesel engine E-TVCS (Economical, ecological type)		
	Output ISO90249	PS/rpm	10.2/2050	
		kW/rpm	7.4/2050	
	Number of cylinders	3		
	Bore × stroke	mm	67 × 68	
	Displacement	cc	719	
Overall length	mm	2980		
Overall height	mm	2230		
Swivelling speed	rpm	8.3		
Rubber shoe width	mm	180		
Tumbler distance	mm	1010		
Dozer size (width × height)	mm	750/990 × 200		
Hydraulic pumps	P1, P2	Gear pump		
	Flow rate	ℓ/min	10.5 + 10.5	
	Hydraulic pressure	MPa (kgf/cm <sup>2</sup> )	17.6 (180)	
	P3	Gear pump		
	Flow rate	ℓ/min	3.1	
	Hydraulic pressure	MPa (kgf/cm <sup>2</sup> )	2.9 (30)	
Max. digging force	Arm	kN (kgf)	5.4 (550)	
	Bucket	kN (kgf)	10.4 (1060)	
Boom swing angle (left/right)	deg	55/55		
Auxiliary circuit	Flow rate	ℓ/min	21.0	
	Hydraulic pressure	MPa (kgf/cm <sup>2</sup> )	180	
Hydraulic reservoir	ℓ	12.5		
Fuel tank capacity	ℓ	12.0		
Max. travelling speed (high/low)	km/h	2.0/4.0		
Ground contact pressure	kPa (kgf/cm <sup>2</sup> )	25.3 (0.26)		
Ground clearance	mm	140		



Unit: mm

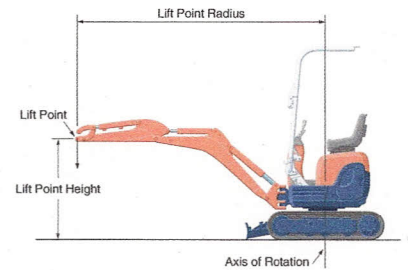
# LIFTING CAPACITY

Lift Point Height	kN (ton)								
	Lifting point radius (1.5m)			Lifting point radius (2m)			Lifting point radius (2.5m)		
	Over-front		Over-side	Over-front		Over-side	Over-front		Over-side
	Blade Down	Blade Up		Blade Down	Blade Up		Blade Down	Blade Up	
2.0 m	-	-	-	2.1 (0.21)	2.1 (0.21)	1.9 (0.19)	-	-	-
1.0 m	3.6 (0.37)	3.2 (0.33)	2.7 (0.28)	2.7 (0.28)	2.0 (0.21)	1.7 (0.18)	2.2 (0.23)	1.4 (0.15)	1.2 (0.13)
0 m	4.8 (0.49)	2.8 (0.28)	2.3 (0.24)	3.1 (0.32)	1.8 (0.19)	1.6 (0.16)	2.2 (0.23)	1.4 (0.14)	1.1 (0.12)
-1.0 m	3.1 (0.31)	2.8 (0.28)	2.3 (0.24)	2.1 (0.21)	1.8 (0.18)	1.5 (0.16)	-	-	-

Please note:

\* The lifting capacities are based on ISO 10567 and do not exceed 75% of the static tilt load of the machine or 87% of the hydraulic lifting capacity of the machine.

\* The excavator bucket, hook, sling and other lifting accessories are not included on this table.



\* Working ranges are with Kubota standard bucket, without quick coupler.  
\* Specifications are subject to change without notice for purpose of improvement.

## KUBOTA (U.K.) LTD

Dormer Road, Thame, Oxfordshire,  
OX93UN, U.K.  
Phone : 01844-268140  
Fax : 01844-216685